

Mark's Model Works

Laser Cut Cabbage Tree Instructions



Take approximately 200mm long piece florists wire and coat the top section in White glue



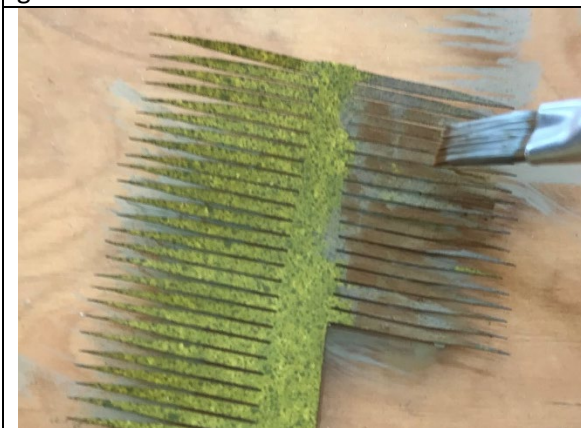
Cover in fine ground foam. This will form the trunk inside the head



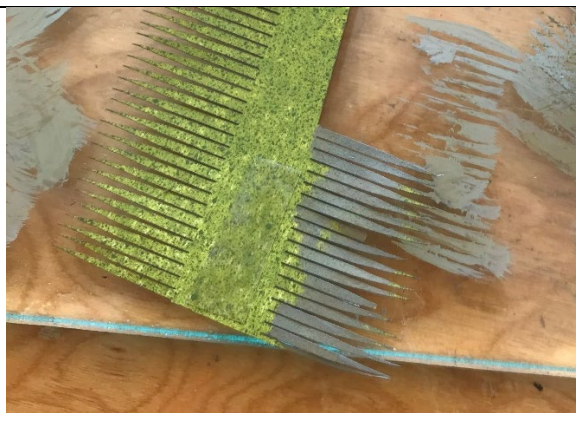
Use as many heads as you'll need to make a good tree



Add a small piece of Double Sided Tape to the wide end of the head



Colour the dead leaves greys and browns to your liking. You can add extra colour to the upper leaves.



Peel off the double sided tape

Mark's Model Works

Laser Cut Cabbage Tree Instructions



Stick the top of the wire to the tape and start the roll



Add some white glue along the centre of the head and finish rolling



Clamp the roll in and clothes peg



When the glue is set fold the top leave down to form the head



Curl the leaves to get the right look



Repeat and make a good number of heads

Mark's Model Works

Laser Cut Cabbage Tree Instructions



Twist the wire trunks together in two's and three's to get a natural look. Make a few bunches of heads.



Add the bunches together and continue twisting the wires to form the trunk.



Coat the wire trunk in white glue



Cover in the fine ground foam.



Colour the trunks with some dry brushing to get the smoother bark look.