

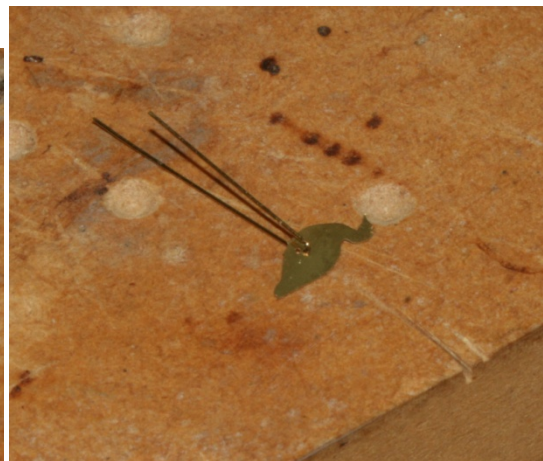
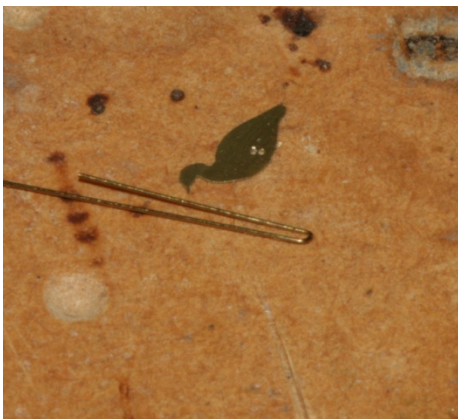
Mark's Model Works 1/64th scale New Zealand Native Birds

Instruction sheet

Walking and wading Birds



1. Carefully drill a hole in the body for the legs
2. Gently clean the brass and remove the "bird" from the etch



3. Use some fine wire for the legs, bend together
4. Solder or glue the wire to the body



5. Build up the body with solder, glue, putty or layers of paints
6. Paint bird to prototype colours

Perched Birds



1. Gently clean the Bird and remove from the etch with a sharp knife
2. Hold the tail in a vice or pliers



3. Twist the body and tail 90°



4. Hold the tail and build up the body with solder, glue, putty or layers of paint
5. Paint bird to the prototype

The Etch can also be polished, lacquered, mounted and framed as art work.