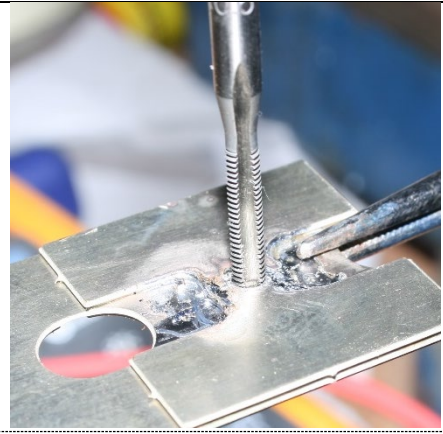


## Roul Bar Clamp instructions



Remove the butterfly wings then fold 180°



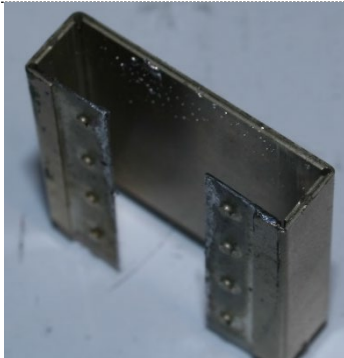
Solder and tap the hold to M3



Add the butterfly wings to a M3 screw



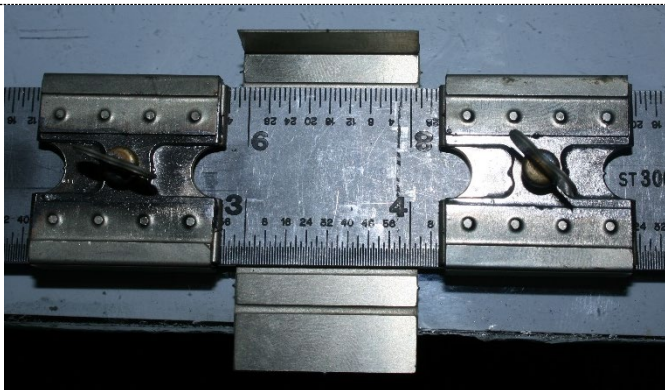
Fold the spring 180° toward the etched line  
This forms the spring plate



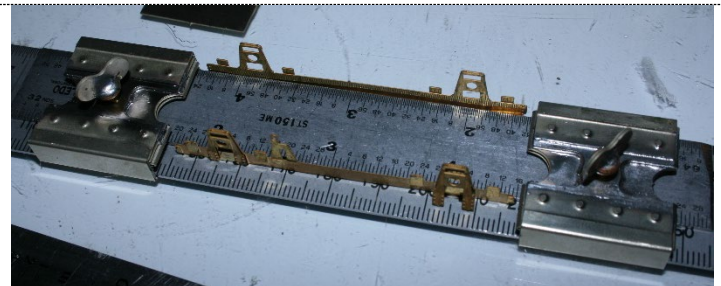
Fold the housing 90° to form and box section



Insert the 2 halves, use rulers to force the spring up and solder the sections together. Remember to remove the screw!!



With one clamp in place on the rulers slide the work piece between the rulers then slide the other clamp in place, line up the etched fold line with the edge of the rulers, then tighten the screws.



Combine different size rulers to make narrower folds work